



**JUMAIRA LIGHT INDUSTRIES. L.L.C**  
ALL KINDS OF ARCHITECTURAL, ALUMINIUM & GLAZING WORKS.

## PRE- QUALIFICATION



ISO 9001:2015  
**BUREAU VERITAS**  
Certification



P.O. Box : 6466, Dubai ,U.A.E  
Website: [www.jli.ae](http://www.jli.ae)  
Email: [jli@emirates.net.ae](mailto:jli@emirates.net.ae)  
Tel no. 04 267 7999 Fax no. 04 258 6668



**JUMAIRA LIGHT INDUSTRIES L.L.C.**  
ALL KINDS OF ARCHITECTURAL, ALUMINIUM & GLAZING WORKS

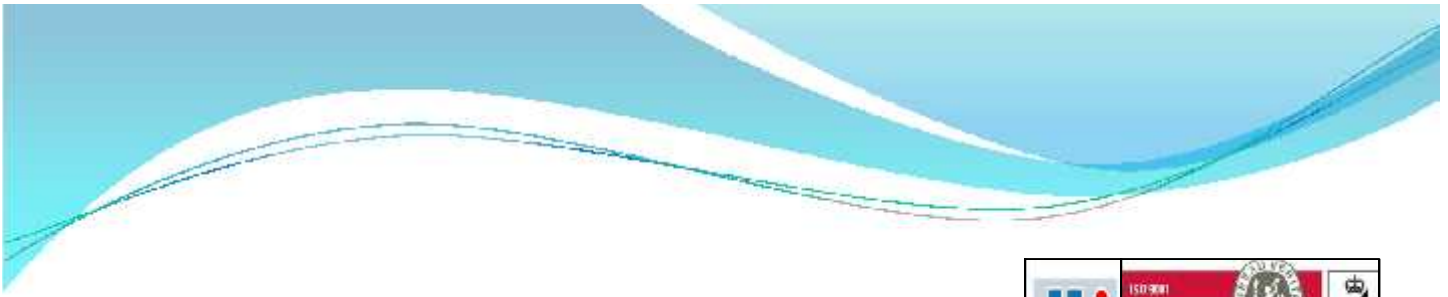


**Jumaira Light Industries L.L.C.** is one of the leading architectural Aluminum Fabrication and Installation company in U.A.E. representing entire Solutions in Projects Managements. Founded in the year 2000 by two companies having vast experience specializing in Design and Engineering using advanced Aluminum Systems.

**Jumaira Light Industries L.L.C.** is an ISO 9001:2015 certified company which provides organized and transparent system.

Quality and customer satisfaction are the watchwords at Jumaira Light Industries, and bottom line will never come between our decisions and achieving these goals. We make sure that only reputed and approved profile extruders and powder coating processors with the highest standards of fabrication and finishing is approved for installation at site. The same standards are applied to the glasswork that we carry out.

Our workshop in Al Qusais Industrial Area contains up to date machinery and equipment with skilled operators.



## PRODUCT RANGE:

- ❖ 4 -way structural glazed system
- ❖ 2 - way structural glazed system
- ❖ Classic curtain wall system
- ❖ Thermal break system
- ❖ Normal glazing work
- ❖ Sky lights & domes
- ❖ Canopies & air lock lobbies
- ❖ Double glazing plant
- ❖ Spider glass system ( transparent )
- ❖ Composite panel cladding
- ❖ Stainless steel works
- ❖ Automatic sliding & swing doors
- ❖ Cast aluminium gates and grills
- ❖ Balcony and staircase railings

100,000 M2 / YEAR

We have back up of work force around 300 employees from our associated companies. We can provide product testing which is required for Curtain Wall and Skylights such as:

- ✓ Air infiltration
- ✓ Water penetration
- ✓ Wind load deflection





جميرا للصناعات الخفيفة (ش. ذ. م. م.)  
**JUMAIRA LIGHT INDUSTRIES L.L.C.**  
All Kinds of Aluminium & Glass Works جميع أنواع أعمال الألمنيوم والزجاج

### QUALITY POLICY STATEMENT

We, as employees of JUMAIRA LIGHT INDUSTRIES LLC engaged in Supply, Fabrication and Installation of all kinds of Architectural Aluminium and Glass works are committed to satisfy requirements of customers by supplying quality products at a competitive price and delivering them on time.

We are also committed to continually improve our organization by implementing the quality objectives set at all functions. The above shall be achieved by the involvement of the employees at every stage of the operations.

The Policy and Objectives will be periodically reviewed by the Top Management to ensure continuing suitability. The Policy and Objectives are communicated to all the personnel.

All of the above should be undertaken in line with the business plan across the whole business which supports the strategic direction of Company.

This intent is supported by Quality Management System based on ISO 9001:2015 which will operate in all the Company's are of activity.

This Policy will be made known to all staff and will be reviewed on a regular basis.

  
**Mansour Abdulrahman**  
Managing Director

**Date: 01 June, 2017**



جميرا للصناعات الخفيفة (ش.ذ.م.م.)

**JUMAIRA LIGHT INDUSTRIES L.L.C.**

All Kinds of Aluminium & Glass Works

جميع أنواع أعمال الألمنيوم والزجاج

### ENVIRONMENTAL, HEALTH AND SAFETY POLICY

JUMAIRA LIGHT INDUSTRIES LLC embraces its responsibility to operate in a manner that protects the environment and human health and safety in order to create, conserve and ascertain a safe and clean environment for sustainable development and support the company's long-term growth and reputation as a responsible corporate citizen. We will meet this responsibility by the following actions.

- Comply with or exceed requirements of global, national, state and local statutes, regulations and standards protecting the environment and human health and safety. In the absence of laws and regulations or where they are simply not adequate for our operations, we will apply sound environmental health and safety (EHS) management practices.
- Identify, prevent, control and minimize adverse environmental impacts and health associated with operational activities.
- Continually improve health safety and environmental performance by setting objectives and targets to prevent or reduce pollution and waste.
- Develop and maintain highly motivated and trained work force for effective management of the environment and control of hazards and risks.
- Incorporates EHS considerations into our business decision-making processes.
- Work to prevent accidents, injuries and unsafe work conditions; promote energy and water conservation; encourage the reuse and recycling of materials; and reduce waste, emissions and the use of hazardous substances in our operations.
- Monitor emerging issues and keep abreast of regulatory changes, technological innovations and stakeholder interests.
- Strive to continually improve our environmental performance keeping in the view the regulatory and other requirements, community concerns and technological advancements.
- Regularly communicate relevant and meaningful information about our EHS performance to our internal and external stakeholders.

It is the responsibility of JUMAIRA LIGHT INDUSTRIES LLC staff to establish policy, govern compliance and review the company's EHS performance with company and business unit management on a periodic basis, including compliance with this policy.

JUMAIRA LIGHT INDUSTRIES LLC management is responsible for implanting this policy, allocating adequate resources and developing EHS programs. Employees and on-site contractors are responsible for integrating sound EHS practices into their everyday activities and acting in a manner that is protective of the environment and human health and safety.

Mansour Abdulrahman  
Managing Director

Date: 01 June, 2017



## CONTENTS:

Appendix A	License & Certificate
Appendix B	Business Associates
Appendix C	Organization Chart
Appendix D	Ongoing Projects
Appendix E	Completed Projects
Appendix F	Landmark Projects



# CERTIFICATE



# ISO 9001:2015 CERTIFICATION







**BUREAU VERITAS**  
Certification



## **JUMAIRA LIGHT INDUSTRIES LLC**

**P. O. BOX 33791, DUBAI,  
UNITED ARAB EMIRATES.**

*Bureau Veritas Certification Holding SAS – UK Branch certifies that the Management System of the above organisation has been audited and found to be in accordance with the requirements of the management system standards detailed below*

### **ISO 9001:2015**

*Scope of Certification*

#### **SUPPLY, FABRICATION, INSTALLATION AND MAINTENANCE OF ARCHITECTURAL ALUMINIUM AND GLASS WORKS.**

Original cycle start date: **12<sup>th</sup> JULY 2011**

Expiry date of previous cycle: **11<sup>th</sup> JULY 2017**

Recertification Audit date: **18<sup>th</sup> MAY 2017**

Recertification cycle start date: **29<sup>th</sup> JUNE 2017**

Subject to the continued satisfactory operation of the organization's Management System, this certificate expires on: **11<sup>th</sup> JULY 2020**

Certificate No. **IND17.4393U/Q**

Version No. **1**, Revision date: **29/06/2017**

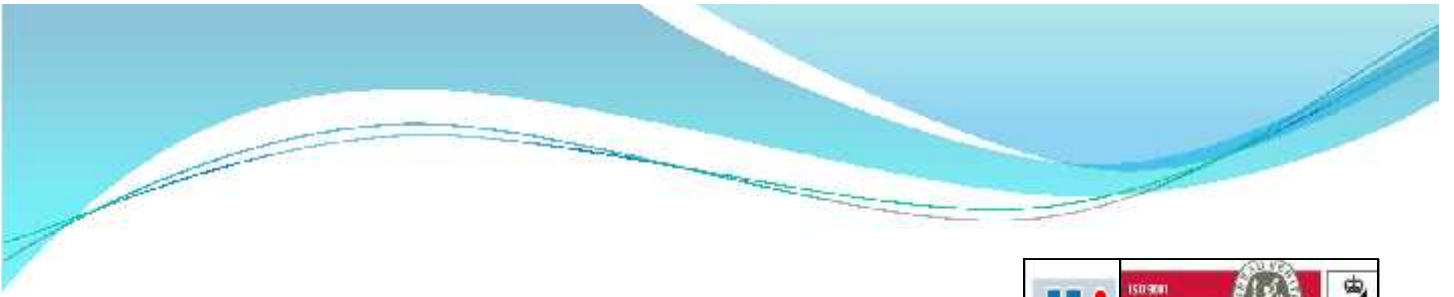
  
**Signed on behalf of BVCH SAS UK Branch**



0008

Certification body address: 5<sup>th</sup> Floor, 66 Prescott Street, London E1 6HG, United Kingdom  
Local office: Bureau Veritas Certification, P.O Box 9110, 21<sup>st</sup> Second Floor, 2nd of December Street,  
Dune Center, Satwa, Dubai, UAE

Further clarifications regarding the scope of this certificate and the applicability of the management system requirements may be obtained by consulting the organisation.  
To check this certificate validity please call: 00971 4 3074400



## BUSINESS ASSOCIATES



SCHÜCO



Wind and weather protection system with insulated glazing



Aluminium folding sliding doors





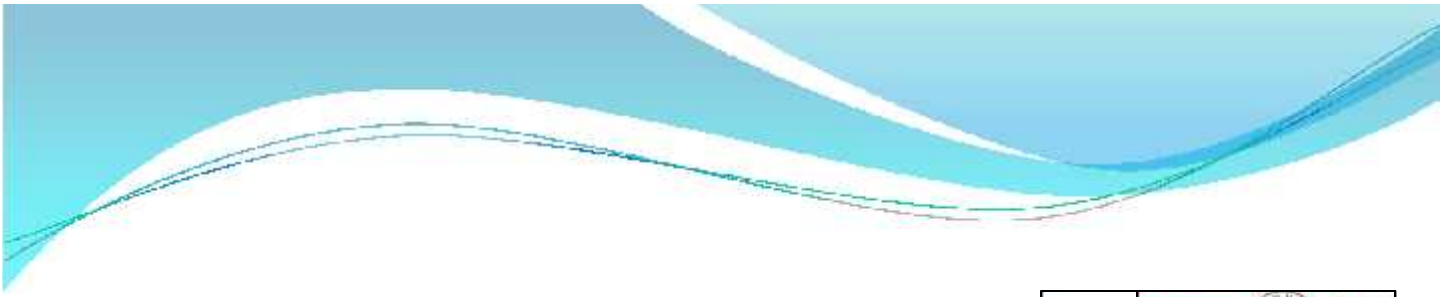
			
	<b>ALUMINIUM PROFILES</b>		
	Gutmann	Germany	
	Technal	France	
	Gulf Extrusions	UAE	
	Balexco	Bahrain	
	Al Jaber	UAE	
	<b>GLASS</b>		
	Glaveral	Belgium	
	Pilkinton	USA	
	SaintGobain	France	
	Ford	USA	
	<b>ACCESSORIES</b>		
	Dorma	Germany	
	Geze	Germany	
	Besam	Sweden	
	Savin	Italy	
	Giesse	Italy	
	<b>SILICONE</b>		
	Dow Corning, Wacker, Tremco, GE		
	<b>ALUMINIUM COMPOSITE PANEL</b>		
	Alubond	USA	
	<b>EQUIPMENT SUPPLIERS</b>		
	Tamglass	Finland	
	Emmeggi	Italy	
	Elumatic	Germany	
	Usec Austria		
<b>GULF EXTRUSIONS CO. (L.L.C.)</b>			<b>Al Jaber Group</b>





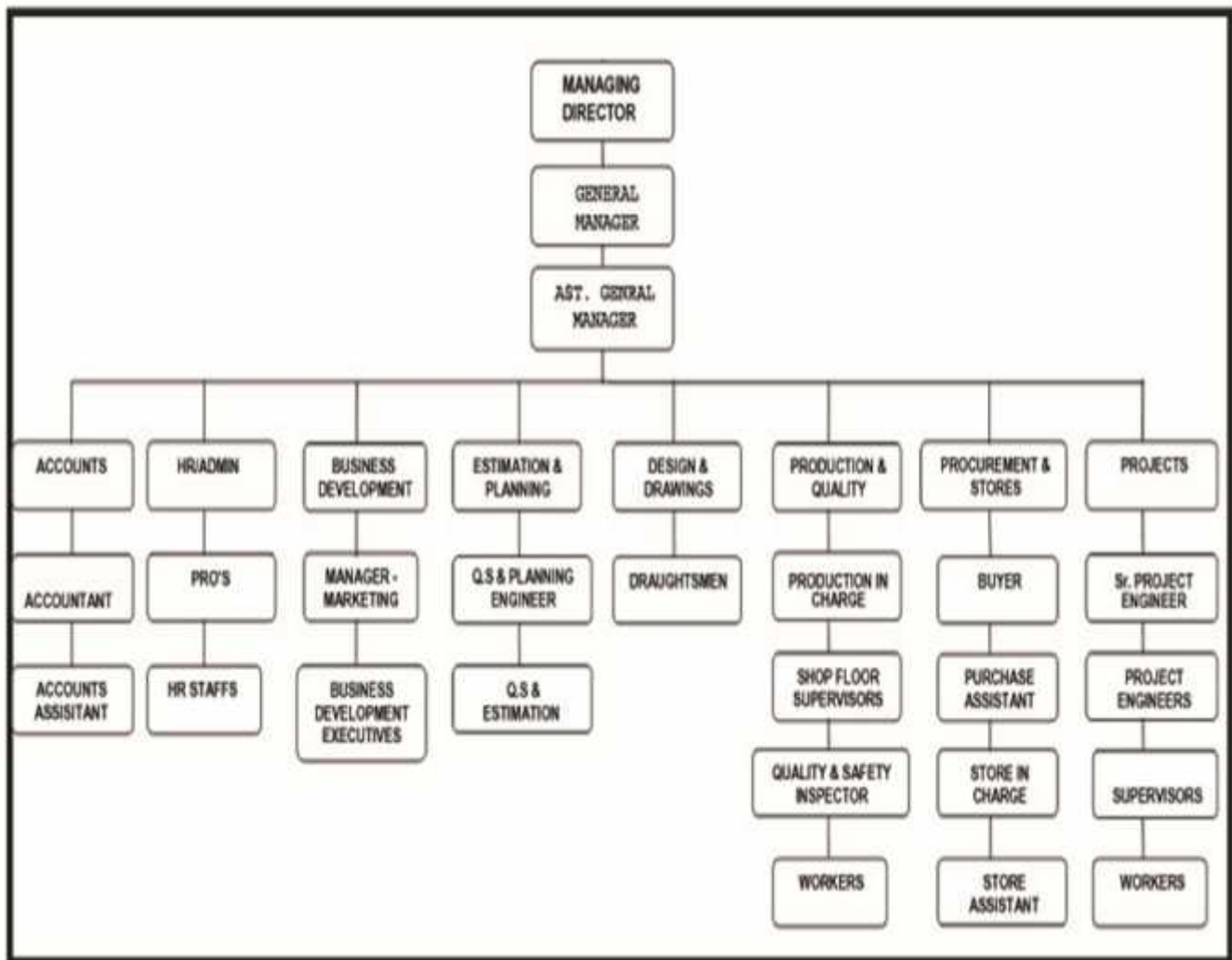
## OUR MAIN SUPPLIERS FOR ALUMINIUM PROFILES

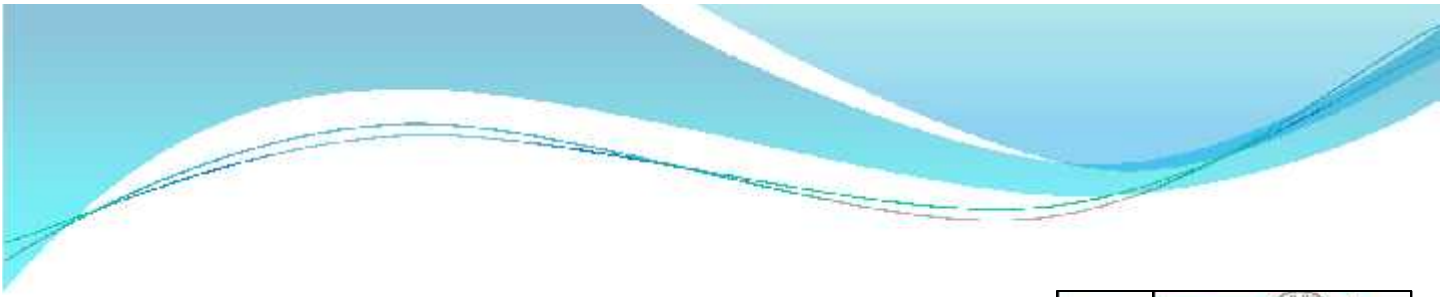
- SCHUCO System from Germany.
- TECHNAL System from France.
- REYNAERS European System.
- KAWNEER System from UK.
- Gutmann System from Germany.
- ESC Aluminium System.
- KLIMA FLEX Aluminium System.
- ALUMIL Aluminium System.
- Kloeber Aluminium System.
- Gulf Extrusions
- Al Jaber Extrusions
- Arabian Extrusions



## ORGANIZATION CHART

# ORGANIZATION CHART





## MANPOWER





SL NO	DESIGNATION	NUMBER
1	MANAGER OPERATIONS	1
2	MANAGER MARKETING & ADMIN.	1
3	FACTORY IN CHARGE	1
4	SENIOR PROJECT MANAGER	1
5	PROJECT ENGINEERS	2
6	FACTORY SUPERVISORS	1
7	SITE SUPERVISORS	6
8	QUANTITY SURVEYOR	1
9	ESTIMATOR	2
10	AUTOCAD DRAUGHTSMAN	1
11	BUSINESS DEVELOPMENT	1
12	PURCHASER	1
13	STOREKEEPERS	1
14	SAFETY CUM QUALITY INSPECTOR	1
15	ACCOUNTS & FINANCE	2
16	OFFICE STAFF	12
17	SKILLED AND SEMI SKILLED	105
18	DRIVERS	5



## KHANSAHEB

KHANSAHEB CIVIL ENGINEERING L.L.C.  
Al Rashidiya  
P.O. Box 2716  
Dubai, United Arab Emirates

## تأشيرة

خاتمة تأشيرة الهندسة المدنية  
الرائدة  
رقم 17  
في الإمارات العربية المتحدة

Date: 09 September 2014

### TO WHOM IT MAY CONCERN

We hereby certify that M/s Jumaira Light Industries is our main sub-contractor for aluminum and cladding works and since it is our sister company, we supply them with labour force and whatever they need of workers to carry out their commitments throughout U.A.E.

This Certificate is given on their request without taking any responsibility of any kind or third party claim.

For Khansaheb Civil Engineering LLC.

Asst. Personnel Manager  
Amir Al Saeed





## ONGOING PROJECTS



## LIST OF ONGOING PROJECTS

Project	Client	Consultant	Contractor	Location
Proposed B+G+M Shed	Mr. Ali Mohammad Obaid AlQutami Al Suwaidi	Castle Architectural Consultants	Jams Contracting LLC	Al Qusais First
Proposed Building (B+G+1 Offices) & Proposed Shed (B+G+M)	Meraas Estates L.L.C.	Eng. Adnan Safarini Design Supervision & Consult	SBB Construction LLC	Ras Al Khor
Construction of 82 nos. Residential Units, Each Unit is Semi-Detached Villas G+1	Shoumous Properties Co. LLC	CUBIC	Darwish Engineering Emirates LLC	Sharjah
G+1 Twin Villa	Mr. Zahra Ali Yahya Yahya	M. Slim Engineering Consultant Office	Mr. Hamdan Ali Yahya Yahya	Sharjah





- Project : Proposed B+G+M SHED
- Consultant: Castle Architectural Consultants
- Contactor: JAMS CONTRACTING LLC



- Project : Proposed Building (B+G+I Offices) & Proposed Shed (B+G+M)
- Consultant: ENG. ADNAN SAFARINI DESIGN SUPERVISION & CONSULT
- Contactor: SBB CONSTRUCTION LLC



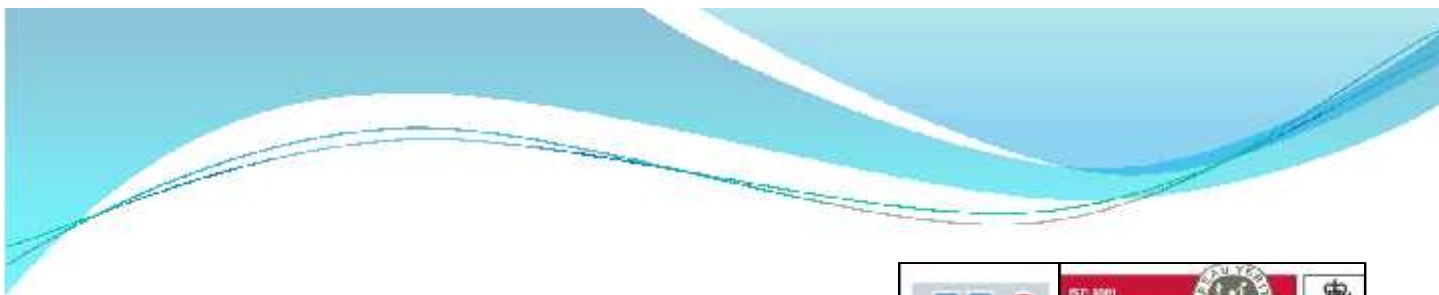


- Project : Construction of 82 nos. Residential Units, Each Unit is Semi-Detached Villas (G+1)
- Consultant: CUBIC (Al Muhab Al Fudhi Engineering Consultants)
- Contactor: DARWISH ENGINEERING EMIRATES LLC



## COMPLETED PROJECTS





## LIST OF COMPLETED PROJECTS

PROJECT	CONSULTANT	CONTRACTOR	LOCATION
Al Jadaf Residence (G+3P+9+R)	Omar Moujaes	Khansaheb Civil Engineering LLC	Al Jadaf
Proposed Villa (B+G+1)	Emirates Engineer Consulting Engineering	Khansaheb Investment LLC	Al Khawaneej 1
Proposed Hotel (G+7+Gym+R) Building	Space Consultant	Khalifa Lootah Contracting LLC	Muraqqabat
Construction of B+G+M Commercial Building	Face Architecture & Design	Khansaheb Civil Engineering LLC	Al Khabais
G+1P+5 Typical Floor Commercial & Residential Building	Arab & Turk International	Jabal Hafeet Building Contracting LLC	Sharjah
G+3+Gym Residential Building	Space Consultant	Khalifa Lootah Contracting	Muhaisnah
G+2 Residential Building (3 nos.) Teachers Residential Complex Phase 1	Arab & Turk International	Jabal Hafeet Building Contracting LLC	Sharjah



## LIST OF COMPLETED PROJECTS

PROJECT	CONSULTANT	CONTRACTOR	LOCATION
Proposed G+1 Residence Villa (3 nos.) + Car Parking Shade	Arab & Turk International	Al Tala Contracting LLC	Sharjah
G-Storey Teacher Accommodation	Arab & Turk International	Darwish Engineering LLC	Sharjah
B+G+5 Floor Commercial/ Residential Building	Arab & Turk International	Gamma Contracting LLC	Al Majan Dubai
B+G+M+4+R Hotel Building	Next Engineering Consultant	Khalifa Lootah Contracting LLC	Muteena
Proposed Factory (G) + Office (G + Mezzanine)	Emirates Engineer Consulting Engineering	Lakestone Contracting LLC	Dubai Investment Park
Proposed Labour Accommodation G+1 & Shed G+M & Shops+Offices	Sharjah Engineering Consultant	Jumaira Light Industries LLC	Sharjah
Proposed G+1 Villa+ Majilis +Service Block+Gym+ Sub. Station+ Swimming Pool	Arab & Turk International	Al Qabdah Building Contracting	Sharjah
B+G+1 Commercial & Residential	A & Z Architectural Engineering Consultant	Khalil Belarti Contracting LLC	Al Quoz



## LIST OF COMPLETED PROJECTS

PROJECT	CONSULTANT	CONTRACTOR	LOCATION
G+3 Commercial & Residential	Q5 Arch Engineering Consultant	Khalil Belarti Contracting LLC	Al Satwa
2B+G+2Floors Office Development	JRHP	Khansaheb Civil Engineering LLC	Mirdif
IKEA Expansion Construction & Refurbishment Works	GOMAC	Khansaheb Civil Engineering LLC	Dubai Festival City
G+4+Roof Residential Building	Arch dome Consultant Engineers	Nashwan Contracting LLC	Al Nahda Dubai
G+4 Labour Accommodation	Emirates Engineer Consultant Engineering	Khansaheb Civil Engineering	Al Quoz
G+3+Roof Labour Accommodation	Emirates Engineer Consultant Engineering	Khansaheb Civil Engineering LLC	Jabel Ali
G+1 Villa	AMEC Al Manhal Engineering Consultant	Khalifa Lootah Contracting LLC	Al Khawaneej
2B+G+9Typ+HC Residential Building	Eng. Adnan Saffarini	Al Qandeel Contracting LLC	Dubailand



## LIST OF COMPLETED PROJECTS

PROJECT	CONSULTANT	CONTRACTOR	LOCATION
Lego Shop Explorers	Arcology International	Khansaheb Civil Engineering	Dubai Marina
Lego Certified Store	Arcology International	Khansaheb Civil Engineering	Dubai Mall
G+M+3+R Commercial Building	Gulf Pioneer Engineering Consultant	Khalifa Lootah Contracting	Naif Deira
International School of Choueifat	Arab & Turk International	Darwish Engineering Emirates LLC	Dubai Invest Park
G+4 Residential Development (12 Bldg)	Aarkitektnik INT	Obaidulla Contracting	Ras Al Khor
G+4 Residential Development (7 Bldg)	Aarkitektnik INT	UNEC	Ras Al Khor
Aminity Office Towers	Home of Architecture	Al Hamra Cst	Ras Al Khaimah
B+G+M+1 Floor Car Show room for Dubai Islamic Bank.	M/s Dar Consultant	M/s Shafar General Cont.	Al Quoz, Dubai
Multi Purpose Hall(The Palledium)	Elite Consulting Engineers	Al Hosenei Contracting	Media City



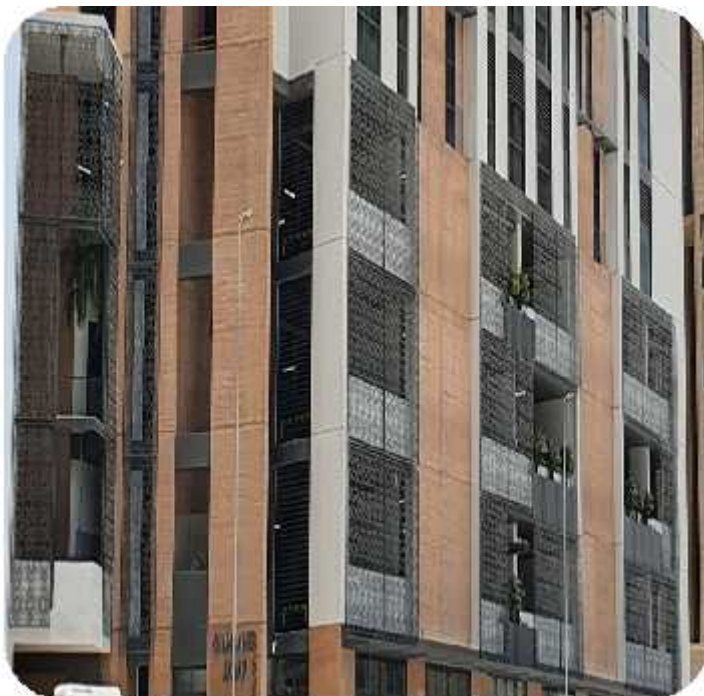
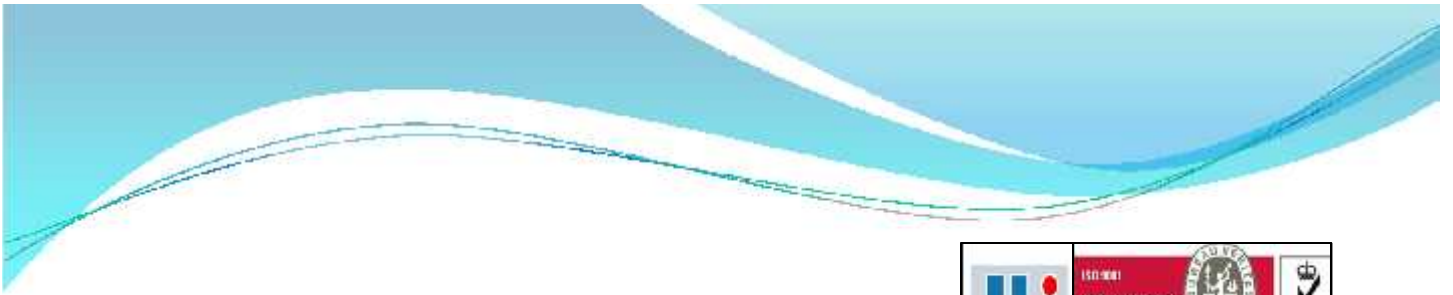
## LIST OF COMPLETED PROJECTS

PROJECT	CONSULTANT	CONTRACTOR	LOCATION
Al Hamra Shopping Mall @ Rak	M/s Dar Consultant	M/s Hamra Const.	Ras Al Khaimah
54 (G+1) Villas At Ras Al Khaimah	M/s Dar Consultant	M/s Hamra Const	Ras Al Khaimah
Palm Deira Sails & Office Complex	Shadid Engineering Consultant	ZSML Construction	PalmDiera Island
Ministry of Health and Dubai Medical District.	Al Suweidi	UNEC	Al Qusais
B+G+3 Comm & Residential Building.	Al Ajmi Architecture	M/s Al Habbai Contg.	Hor Al Anz , Dubai
Rak Airport	RAK Group	AAA Contracting	Al Hamra Cst
New English Speaking School @ RAK	Dar Alemara	Prime Builders Contg Co.	Ras Al Khaimah
G+7 Buildings.	Al Suweidi Eng.	M/s Summer Contg.	Al Raffa
Dr. Moopens Hospital	Al Wasl Al Jadeed	M/s Al Habbai Contracting	Al Safa Dubai
G+1 School of Reach Science.	M/s Bel Youhah	M/s Al Shafar Transport & Cont.Co.	Al Qusais
G+7 Residential Buldg.	M/s Hijazi	M/s Yousef	Deira, Dubai
Bus Service Station For Dubai Municipality	Atkins & Partners Overseas.	M/s Huda Contg.	Al Awir ,Dubai





- Project : Al Jadaf Residence (G+3P+9+R)
- Consultant: Omar Moujaes
- Contactor: KHANSAHEB CIVIL ENGINEERING LLC







- Project : Proposed Villa (B+G+I)
- Consultant: EMIRATES ENGINEER CONSULTING ENGINEERING
- Contactor: KHANSAHEB INVESTMENT LLC







- Project : SCIENTECHNIC PROPOSED OF B+G+M COMMERCIAL BUILDING
- Consultant: FACE ARCHITECTURE & DESIGN
- Contactor: KHANSAHEB CIVIL ENGINEERING LLC





- Project : B+G+7+2R – Hotel Building at Muraqabat Deira
- Consultant: NEXT ENGINEERING CONSULTANTS LLC
- Contactor: KHALIFA LOOTAH CONTRACTING LLC





- Project : (2B+G+2Floors) OFFICE DEVELOPMENT AT MIRDIFF
- Consultant: JRHP
- Contactor: KHANSAHEB CIVIL ENGINEERING LLC





- Project: PROPOSED G+1 RESENCE VILLA (3 NOS.) + CAR PARKING SHADES
- Consultant: ARAB & TURK INTERNATIONAL
- Contactor: AL TALA CONTRACTING LLC



- Project : PROPOSED G+2 RESIDENTIAL BUILDING (3 nos.)  
TEACHERS RESIDENTIAL COMPLEX PHASE I
- Consultant: ARAB & TURK INTERNATIONAL
- Contactor: JABAL HAFEET BUILDING CONTRACTING CO. LLC



- Project: B+G+M+4+R – Hotel Building, Al Muteena, Deira
- Consultant: NEXT ENGINEERING CONSULTANTS LLC
- Contactor: KHALIFA LOOTAH CONTRACTING LLC





- Project: **G+IP+5 TYPICAL FLOOR COMMERCIAL & RESIDENTIAL BUILDING**
- Consultant: **ARAB & TURK INTERNATIONAL**
- Contactor: **JABAL HAFEET BUILDING CONTRACTING CO. LLC**



- Project : 8+G+5 FLOOR COMMERCIAL/RESIDENTIAL BUILDING
- Consultant: ARAB & TURK INTERNATIONAL
- Contactor: GAMMA CONTRACTING LLC





- Project : Zone - D4 - EXPANSION IKEA
- Consultant: SHANKLAND COX
- Contactor: KHANSAHEB CIVIL ENGINEERING LLC

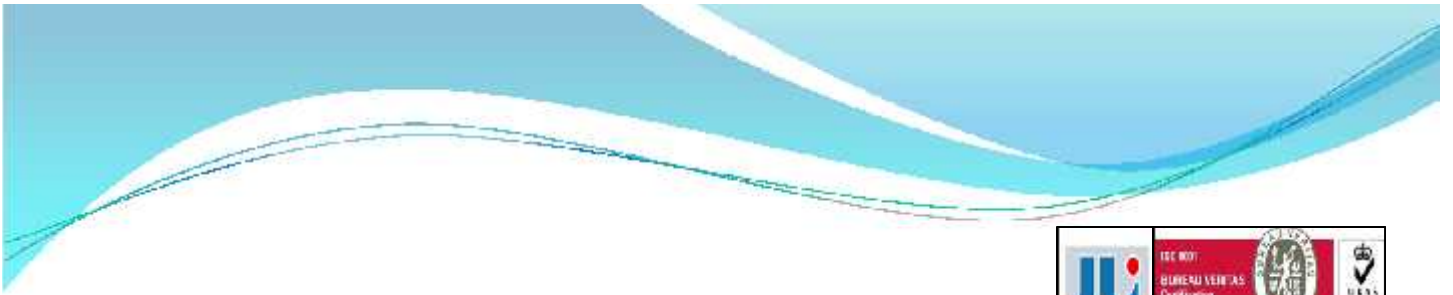


- Project : PROPOSED FACTORY (G) + OFFICE (G + MEZZANINE)
- Consultant: EMIRATES ENGINEER CONSULTING ENGINEERING
- Contactor: KHANSAHEB INDUSTRIES LLC



- Project : **G+1 Villa+ Majilis +Service Block+Gym+ Sub. Static + Swimming Pool**
- Consultant: **ARAB & TURK INTERNATIONAL**
- Contractor: **AL QABDAH BUILDING CONTRACTING**





- Project : G+4+Roof RESIDENTAIL BUILDING AT AL NAHDA 2
- Consultant: ARCHDOME CONSULTING ENGINEERS
- Contactor: NASHWAN GENERAL CONTRACTING LLC



- Project : **G+3+ROOF LABOUR ACCOMMODATION**
- Consultant: **EMIRATES ENGINEERING CONSULTING ENGINEERING**
- Contactor: **KHANSABEY CIVIL ENGINEERING LLC**

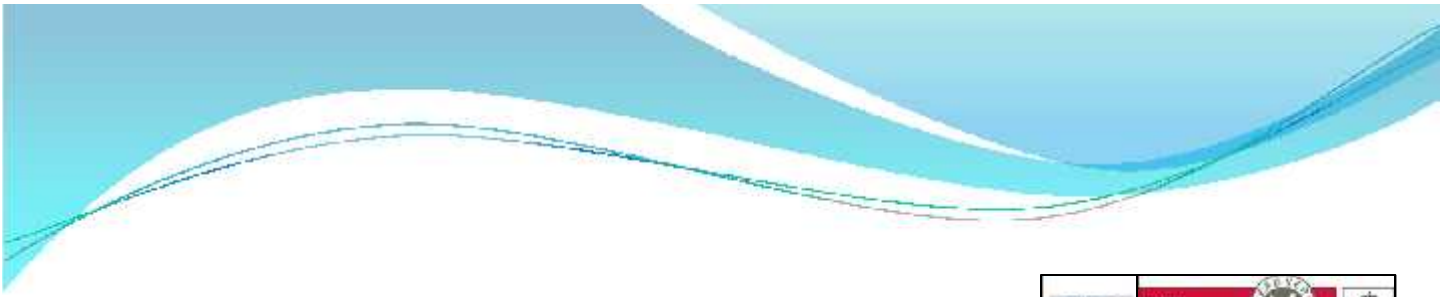




- Project : (2B+G+9T<sub>p</sub>+11C) RESIDENTIAL BUILDING
- Consultant: ENG. ADNAN SAFFARINI
- Contactor: AL QANDEEL CONTRACTING LLC

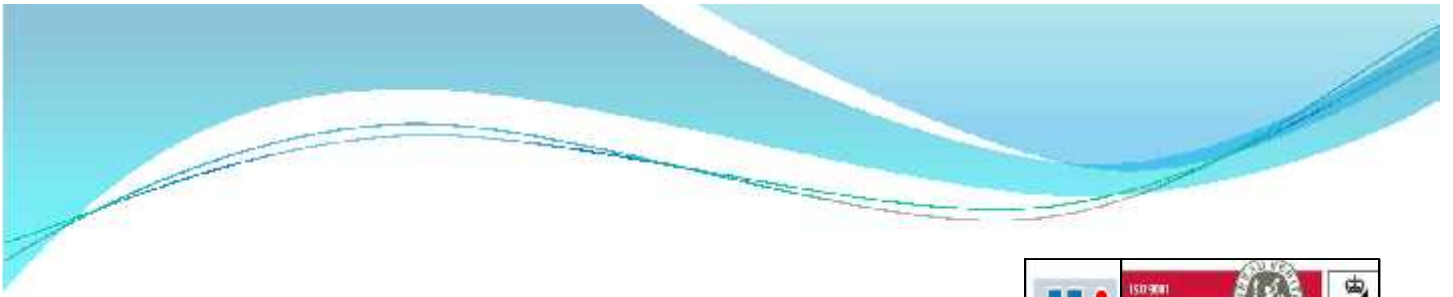


- Project : LEGO CERTIFIED STORE DUBAI MALL, U.A.E.
- Consultant: ARCOLOGY INTERNATIONAL
- Contactor: KHANSAHEB CIVIL ENGINEERING



- Project : M/S. PARTS & BATTERY WAREHOUSE @ DIC
- Client : DABASHI ENGINEERING
- Consultant : AL HASHEMI , PLANNERS, ARCHITECTS & ENGINEERS
- Contractor : DOLPHIN CONSTRUCTION L.L.C





- Project : INTERNATIONAL SCHOOL OF CHOUEIFAT
- Consultant : ARAB & TURK INTERNATIONAL
- Contractor : DARWISH ENGINEERING EMIRATES L.L.C.



- Project : OFFICE COMMERCIAL BUILDING
- Consultant : AL MANHAL ENGINEERING CONSULTANT
- Contractor : KALIFA LOOTHA



- Project : G+M+3 RESIDENTIAL/COMMERICAL BUILDING
- Consultant : ARKIPLAN CONSULTING ARCHITECTS
- Contractor : M-TECH CONSTRUCTIONS L.L.C.





- Project : Rus Service Station for Dubai Municipality
- Consultant : Atkins & Partners Overseas
- Contractor : M/s Al Huda Contracting





- **Project** : Multipurpose Hall (THE PALLADIUM at Dubai Technology & Media Freezone
- **Contractor** : M/s AL-HOSNEI CONTRACTING.



- Project : B+G+3 Commercial Residential Building
- Consultant : A/ Ajmi Architecture
- Contractor : M/s Al Habbai Contracting.

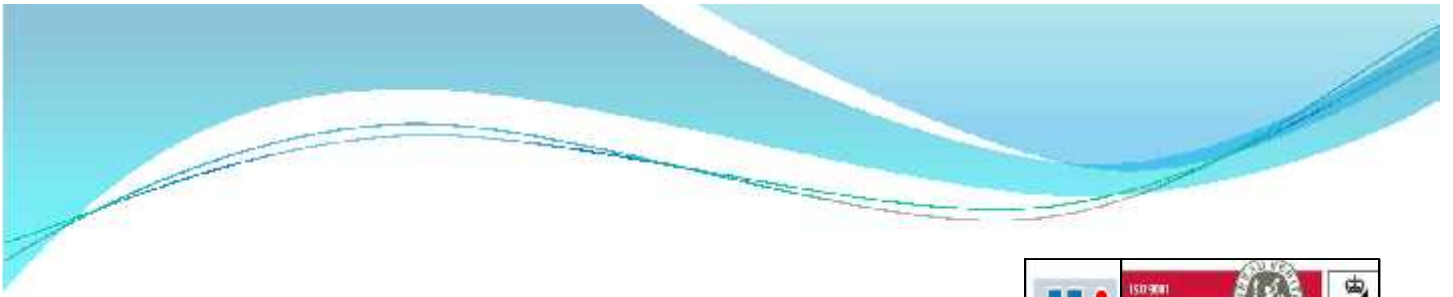


- Project : **G+1 School of Research Science.**
- Consultant : **M/s Bel youhah**
- Contractor : **M/s Al Sfarar Transport & Contracting .co**



- Project : G+1 School of Research Science.
- Consultant : M/s Bel youhah
- Contractor : M/s Al Shafar Transport & Contracting .co





- **Project** : G+2 Commercial & Residential Building.
- **Consultant** : M/s Emirates eng.
- **Contractor** : M/s Tala Contracting



- Project : MEDICAL AND HEALTH SCIENCE UNIVERSITY
- Consultant : M/s Expert Consulting Engineering
- Contractor: M/s Prince Builder Contracting



- Project : G+M+4 RESIDENTIAL BUILDINGS
- Consultant : BABEL ENGINEERING
- Contractor : AL HABBAL CONTRACTING



- Project : AL HAMRA SHOPPING MALL
- Consultant : M/s Dar Architecture Bureau
- Contractor : M/s Al Hamara Construction





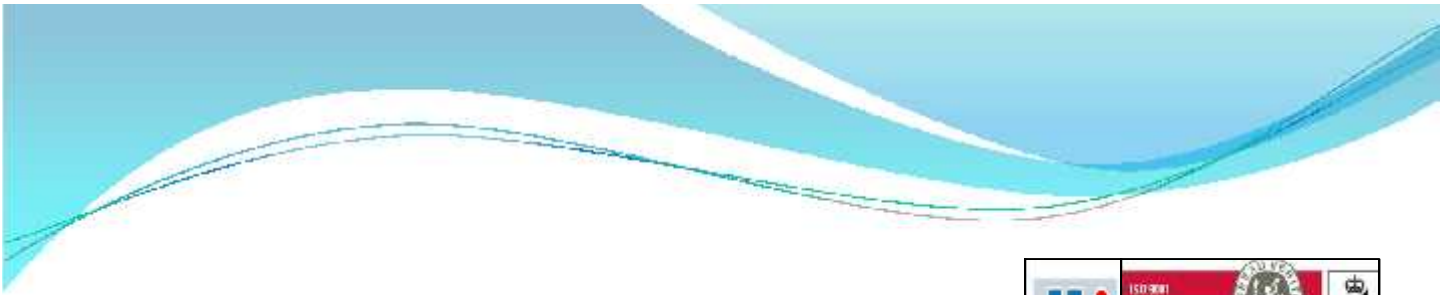
- Project : B+G+2 RESIDENTIAL BLDG.
- Consultant : AL SAHEL CONT.CO.
- Contractor : DAR CONSULTANT



- Project : G+3 RESIDENTIAL BLDG.
- Consultant : ACT CONTRACTING
- Contractor : ARABESQUE



- Project : 20+G+14 FLOOR BUILDING
- Consultant : AL SUWAIDI ENGINEERING CONSULTANT
- Contractor : DST CONSTRUCTIONAL PROJECTS



- **Project** : FACTORY & OFFICE BUILDING
- **Consultant** : WINNER CONSULTING ENGINEERS
- **Contractor** : SUVADA CONTRACTING





- Project : Dr. Moopens Hospital
- Consultant : Al Wasl Al Jadeed
- Contractor : M/s Al Hudailha Contracting



Project : **COMMERCIAL BANK OF DUBAI**  
 Consultant : **AL JABAL CONSULTANCY**  
 Contractor : **ROBUST CONTRACTING.LLC.**



Project : RITAJ RESIDENTIAL BUILDINGS  
Consultant : AL JABAL CONSULTANCY





- Project : G+M+16 STORY RESI. BUILDING
- Consultant : M/s AL BADIA CONT.CO
- Contractor : AL FALASI



- Project : (G+7 STORY)RESIDENTIAL BLDG.
- Consultant : M/s AL YOUSEF CONT.CO.
- Contractor : AL HIJAZI



- Project : Ruler's Villa
- Consultant : ARKITEKNIK Int.
- Contractor : Al Hudaiba Contracting





- **Project** : (B+G+M+1 Floor) Car Showroom for Dubai Islamic bank
- **Consultant** : M/s Dar Consult
- **Contractor** : M/s Al Shafar General Cont.



- Project : 6+1 Villa at Al Was
- Consultant : Eng. Consortium
- Contractor : Khalil Al Fardan



- Project : Office Buildings for Trigon GULF F-ZCO
- Consultant : Chawla Archtrula
- Contractor : Al Nahda Contracting





- Project : G+3 OFFICES & RESIDENTIAL BUILDING
- Consultant : ARAB & TURK INTERNATIONAL
- Contractor : SHAHARCO CONTRACTING.



Project : MOSQUE AT KARAMA  
Consultant : AL HASHEMI  
Contractor : KHANSAHEB CIVIL ENGINEERING  
LLC.



# LANDMARK PROJECTS





- Project : SEVEN STAR PALACE HOTEL
- Consultant : HOME OF ARCHITECTS
- Contractor : AL HAMRA CONTRACTING.



- Project : PALM DEIRA SALES OFFICE
- Consultant : SHADID CONSULTING
- Contractor : ZSML CONSTRUCTION





- Project : TOWER FOR OFFICES
- Consultant : M/s Home of Architecture
- Contractor : M/s Al Hamra Construction





arab & turk international  
consultants / architects / engineers



الشركة العربية التركية العالمية  
استشارات معمارية و هندسية

2<sup>nd</sup> August 2014

### Contractor Recommendation Letter

This is to certify that M/S Jumeira Light Industries L.L.C, has successfully carried out and completed the Aluminum works for International School of Choueifat, DIP, project.

M/S Jumeira Light Industries L.L.C have a good team of technical manpower, performs the work professionally and with devotion to complete the specified projects tasks within the scheduled time and to our clients and our satisfaction.

We wish them every success in their future business and would like to work with them again on our future up-coming projects. We would highly recommend them for any firm who is looking for high quality, professional and a dependable contractor.

Thanking you.

Yours faithfully

الشركة العربية التركية العالمية  
ARAB & TURK INTERNATIONAL  
CONSULTANTS  
P.O. Box 2157, SHARJAH - U.A.E.



August 4, 2014

### Recommendation Letter

This is to certify that M/s. Jumeirah Light Industries LLC has successfully carried out and completed the Aluminium gates and cast aluminium fence for Medcare hospital at Al Saffa, as sub-contractor to M/s.Al Hudaiba Contracting LLC.

We wish them every success in their future business.

This letter is issued as per the request of M/s.Jumeirah Light Industries without any obligation on our part.

For Al Wasi Al Jadeed Consultants

  
Jacob K.T.  
Projects Manager  




<b>The Employer</b> <b>M/s Islamic Affairs &amp; Charitable Activities Department</b>	<b>The Engineer</b>  <b>AL HASHEMI</b> <small>AL HASHEMI ENGINEERING &amp; CONSULTING LLC          P.O. Box 11555, Jeddah 21511, Saudi Arabia          Tel: +966 2 860 1155 - Fax: +966 2 860 1156          Email: info@alhashemi.com.sa</small>	<b>The Main Contractor</b> <b>Q5</b>  <b>KHANSAHEB</b>																																																																																										
		Project: <b>MOSQUE (JAMA)</b>																																																																																										
<b>TECHNICAL SUBMITTAL</b>																																																																																												
TS No.054-Rev.1		Date :03/02/11																																																																																										
Project No	AH - 1074																																																																																											
Employer	M/s Islamic Affairs & Charitable Activities Department																																																																																											
Consultant	AL HASHEMI																																																																																											
Main Contractor	KCE																																																																																											
<b>Details</b> <table border="1" style="width:100%; border-collapse: collapse;"> <tr> <td style="width:30%;">Item Description</td> <td>PREQUALIFICATION WORKS FOR ALUMINIUM &amp; GLAZING WORKS</td> </tr> <tr> <td>Spec./BOQ/Dwg. Reference</td> <td>M/S JUMAIRA LIGHT INDUSTRIES</td> </tr> <tr> <td>List of Enclosures</td> <td></td> </tr> <tr> <td><input checked="" type="checkbox"/> Vendor Technical</td> <td></td> </tr> <tr> <td><input type="checkbox"/> Compliance Statement</td> <td></td> </tr> <tr> <td><input type="checkbox"/> HSE Certificate</td> <td></td> </tr> <tr> <td><input type="checkbox"/> Others</td> <td></td> </tr> </table>		Item Description	PREQUALIFICATION WORKS FOR ALUMINIUM & GLAZING WORKS	Spec./BOQ/Dwg. Reference	M/S JUMAIRA LIGHT INDUSTRIES	List of Enclosures		<input checked="" type="checkbox"/> Vendor Technical		<input type="checkbox"/> Compliance Statement		<input type="checkbox"/> HSE Certificate		<input type="checkbox"/> Others		<table border="1" style="width:100%; border-collapse: collapse;"> <tr> <td colspan="4" style="text-align: center;">KHANSAHEB CIVIL ENGINEERING LLC K0652 - MOSQUE AT AL KARAMA</td> </tr> <tr> <td colspan="4" style="text-align: center;">DATE RECEIVED: <b>07/02/11</b></td> </tr> <tr> <td colspan="4" style="text-align: center;">LOG REF: <b>50/02</b></td> </tr> <tr> <td style="text-align: center;">Distribution</td> <td style="text-align: center;">Original</td> <td style="text-align: center;">Copy</td> <td style="text-align: center;">Action</td> </tr> <tr> <td>Contract Manager</td> <td></td> <td></td> <td></td> </tr> <tr> <td>Spec. Manager</td> <td></td> <td></td> <td></td> </tr> <tr> <td>Site Agent</td> <td></td> <td></td> <td></td> </tr> <tr> <td>MEP Coordinator</td> <td></td> <td></td> <td></td> </tr> <tr> <td>Civil Coordinator</td> <td></td> <td></td> <td></td> </tr> <tr> <td>Quantity Surveyor</td> <td></td> <td></td> <td></td> </tr> <tr> <td>Engineers</td> <td></td> <td></td> <td></td> </tr> <tr> <td>QA/QC</td> <td></td> <td></td> <td></td> </tr> <tr> <td>Safety</td> <td></td> <td></td> <td></td> </tr> <tr> <td>Personnel</td> <td></td> <td></td> <td></td> </tr> <tr> <td>Surveys</td> <td></td> <td></td> <td></td> </tr> <tr> <td>Al Hashemi</td> <td></td> <td></td> <td></td> </tr> <tr> <td>Sub-Contractor</td> <td></td> <td></td> <td></td> </tr> <tr> <td>Head Office</td> <td></td> <td></td> <td></td> </tr> <tr> <td>Site FBI</td> <td></td> <td></td> <td></td> </tr> </table>	KHANSAHEB CIVIL ENGINEERING LLC K0652 - MOSQUE AT AL KARAMA				DATE RECEIVED: <b>07/02/11</b>				LOG REF: <b>50/02</b>				Distribution	Original	Copy	Action	Contract Manager				Spec. Manager				Site Agent				MEP Coordinator				Civil Coordinator				Quantity Surveyor				Engineers				QA/QC				Safety				Personnel				Surveys				Al Hashemi				Sub-Contractor				Head Office				Site FBI			
Item Description	PREQUALIFICATION WORKS FOR ALUMINIUM & GLAZING WORKS																																																																																											
Spec./BOQ/Dwg. Reference	M/S JUMAIRA LIGHT INDUSTRIES																																																																																											
List of Enclosures																																																																																												
<input checked="" type="checkbox"/> Vendor Technical																																																																																												
<input type="checkbox"/> Compliance Statement																																																																																												
<input type="checkbox"/> HSE Certificate																																																																																												
<input type="checkbox"/> Others																																																																																												
KHANSAHEB CIVIL ENGINEERING LLC K0652 - MOSQUE AT AL KARAMA																																																																																												
DATE RECEIVED: <b>07/02/11</b>																																																																																												
LOG REF: <b>50/02</b>																																																																																												
Distribution	Original	Copy	Action																																																																																									
Contract Manager																																																																																												
Spec. Manager																																																																																												
Site Agent																																																																																												
MEP Coordinator																																																																																												
Civil Coordinator																																																																																												
Quantity Surveyor																																																																																												
Engineers																																																																																												
QA/QC																																																																																												
Safety																																																																																												
Personnel																																																																																												
Surveys																																																																																												
Al Hashemi																																																																																												
Sub-Contractor																																																																																												
Head Office																																																																																												
Site FBI																																																																																												
Issued by M/s. Khansaheb Civil Engineering (L.L.C) Project Manager: <i>[Signature]</i> Date: _____ Response required by: _____		Received by M/s. AL - Hashemi Project Manager: _____ Date: _____ <div style="border: 1px solid black; padding: 5px; text-align: center; margin-top: 10px;"> <b>AL HASHEMI</b>  <b>AH - 1074</b>  <b>03 FEB 2011</b>  <b>RECEIVED</b> </div>																																																																																										
<b>FOR THE USE OF AL - HASHEMI</b>																																																																																												
<b>Action :</b> <input type="checkbox"/> 1- Approved <input type="checkbox"/> 3- Revise and Resubmit <input type="checkbox"/> 5- Not Reviewed <input checked="" type="checkbox"/> 2- Approved With Comments <input type="checkbox"/> 4- Rejected <input type="checkbox"/> 6- Other																																																																																												
<b>NOTE :-</b> For Action 3 and 4 a copy of this transmittal to be attached to the Re-Submittal																																																																																												
<b>Comments :</b> <div style="border: 1px solid black; padding: 5px; margin-top: 5px;"> <p>★ Client/Engineer has no objection.</p> <p>★ Materials &amp; shop drawings shall be submitted</p> </div>																																																																																												
Reviewed By : <u>PM</u>		Date : _____																																																																																										
Engineer's Representative : <u>07/02/11</u>		Date : <u>07/02/2011</u>																																																																																										
Received By : M/s. Khansaheb Civil Engineering (L.L.C)																																																																																												
Project Manager :		Date :																																																																																										

The approval by the Engineer does not relieve Contractor / Sub-contractor from his obligations/responsibilities under the contract and shall not constitute a departure from the contract

according to contract conditions / specifications





KHANSAHEB CIVIL ENGINEERING LLC			
K8471 - SAFA VILLA 2			
DATE RECEIVED 30/01/13			
LOG REF. 01/442			
Distribution	Design	Draw	Section
Contract Manager			
Project Manager			
Site Agent	✓	✓	
Civil Coordinator			
Quantity Surveyor			
Engineer		✓	
Inspector			
Site Supervisor			
SAFA VILLA 2 PHASE 2	✓	✓	
Khansaheb Civil Engineering LLC			
Site File	✓		

	<b>1491 - SAFA VILLA 2</b>		<b>TECHNICAL SUBMITTAL</b>
CONTRACT NO.	K8471	Submittal Type:	TECHNICAL SUBMITTAL
CONTRACT TITLE	SAFA VILLA 2 PHASE 2	Submittal No.	KCE/JLI/TS/012
CONTRACTOR	Khansaheb Civil Engineering LLC	Revision No.	02
		Revision Date	27/01/2013
		Title	Pre Qualification Document for Aluminium Glazing Works
		Discipline	Structural

Product Name : Aluminium Glazing Works  
 Manufacturer : Jumaira Light Industries LLC

TO : Arif & Bintok

FROM : Khansaheb Civil Engineering LLC

#### DESCRIPTION :

Pre-Qualification Document for Jumaira Light Industries LLC  
 Aluminium Glazing Works  
 1. Quality Policy  
 2. Organization Chart  
 3. List of Approvals  
 4. List of Procedures



#### CONSULTANT'S COMMENTS :

- No objection subject to satisfactory performance  
 - Mock-ups to be done for final approval.  
 - Subject to approval of material

#### CONTRACTOR'S REVIEW

Contractor has reviewed this submission prior to submission to Consultant

SIGNATURE

#### SUBMITTAL STATUS

APPROVED NO COMMENTS ☐

APPROVED AS NOTED ☒

NOT APPROVED - RESUBMIT ☐

FOR RECORD ONLY ☐

Date Received by Consultant

Date Returned to Contractor

#### LEAD SECTOR CONSULTANT'S SIGNATURE

For and on behalf of  
 Arif & Bintok

Date: 30/1/13



**PROJECT: PARTS AND BATTERY V HOUSE AND BATTERY ASSEMBLY ON PLOT NO 5320238 AT SAH SHUAIB3 AT DIC FOR DAHBASHI ENGINEERING.**

**SUBCONTRACTOR/SUPPLIER APPROVAL FORM**

Project no AH-1110	Subcontractor Submittal No: S-400/SC-06
Client: Dabhashi Engineering	Date: 29.01.14
Consultant: Al Hashemi, Planners, Architects, Engineers.	Classification: Civil
Contractor: Dolphin Constructions	Prev. Submittal No: -
Sub-Contractor/Supplier: Jumairah Light Industries	Date: -
Intend to use for "Activity": Aluminium and Glazing works	Status: -
	Copy Attached: Yes / No

Dear Sir,

Please find enclosed 3 sets of supporting documents pertaining to our proposed subcontractor and includes the following:

1. Name and classification.
2. Details of recent performances.
3. Type, number and current location of plant to be deployed on this project.
4. Full list of names, qualifications and experience of staff.
5. Detailed and comprehensive method statement of performance.
6. Certificates/licenses from relevant authorities.
7. Written confirmation that he will act and comply in full conformity with the Contract and the main contractor's programme of work.

<input checked="" type="checkbox"/>
<input checked="" type="checkbox"/>
<input checked="" type="checkbox"/>
<input checked="" type="checkbox"/>
<input checked="" type="checkbox"/>
<input checked="" type="checkbox"/>
<input checked="" type="checkbox"/>

Contractor's Project Manager:

Name: Shahid Shaikh

Signature:

Date: 29/1/14

CONSULTANT COMMENTS:

→ please find attached the comments sheet

STATUS

☐

APPROVED

☒

APPROVED WITH COMMENTS

☐

NOT APPROVED

(An approval does not relieve the contractor of his obligations under the contract and he shall be liable for all acts, defaults and negligence by the subcontractor)

Consultant's Representative:

Name: Mohamed Awad

Signature:

Date: 05/02/2014

CLIENT REPR. COMMENTS:

As per the comment of Consultant's Representative

STATUS

☐

APPROVED

☒

APPROVED WITH COMMENTS

☐

NOT APPROVED

Client's Representative:

Name: MUHAMMAD HUSSAIN

Signature:

Date: 08/02/2014

(Note: Original + One copy of commented submittal should be returned for client/consultant reference.)

Consultant Receipt

Client Repr. Receipt

Contractor Receipt





**Tel. : +971 4 2677999, Fax : +971 4 2586668**  
**P.O.Box 6466 Dubai -UAE**  
**E-mail : [jli@emirates.net.ae](mailto:jli@emirates.net.ae)**





**JUMAIRA LIGHT INDUSTRIES L.L.C.**

Warehouse No. 24, Doha Street,  
Al Qusais Industrial Area

